

# Coating Thickness Tester

## Software Introduction

The Coating Thickness Tester software is a program for downloading data from the meter when it is connected to a Desktop or Notebook PC (Personal Computer). The data is displayed in a list, and includes other details about the set of readings. The software's functions are presented in the main window.

### Supported Operating Systems:

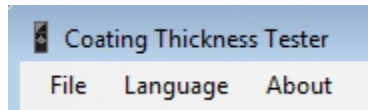
Windows 7, Windows 8.1, Windows 10

### Minimum Hardware Required:

Minimum hardware requirements:

- PC with Pentium 90MHz or higher
- 1 GB RAM
- Display resolution of at least 800 x 600 with High Color (16 bit)

# Main Menu



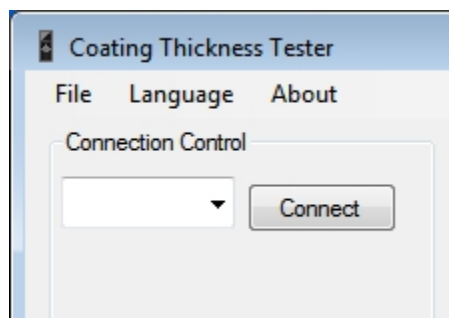
- **File**
  - Data Save As** Save the current group data as an Excel file(.xls)
  - Exit** Exit the program
- **Language**
  - English** Change program language to English
  - Chinese** Change program language to Chinese
- **About**
  - Help** Display the program Help text
  - About** Displays program version information

# Operation

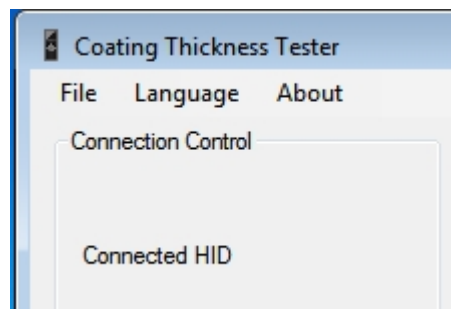
## Connect the Meter to the PC and Software

1. Turn on the meter
2. Connect the micro USB cable to the meter.
3. Connect the USB connector to a USB port on the PC.
4. Start the software.
5. If the meter is recognized by the Software, the program will indicate that the meter is "Connected HID". (HID - Human Interface Device)

Meter – Not connected

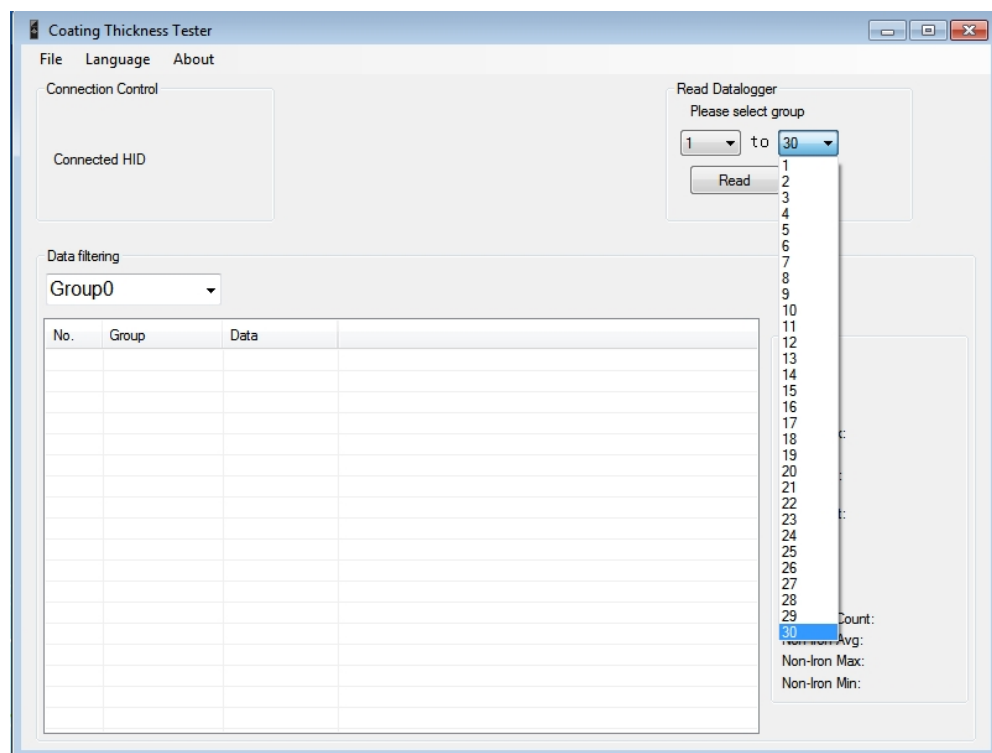
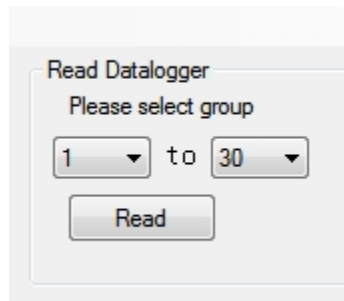


Meter – Connected



## Download Saved Data from the Meter

1. To download the saved data, Connect the meter and select the desired group or group range (30 max) under the Read Datalogger section.
2. Click the **Read** button.
3. The data saved from the group or groups selected will be downloaded to the software.



## Viewing Saved Data and Statistics

1. After a READ operation from Read Datalogger, Pick a group from the Data Filtering pull down menu.
2. The data will appear in the table.  
The data statistics will appear to the right of the table.

The screenshot displays the 'Coating Thickness Tester' application window. It features a menu bar with 'File', 'Language', and 'About'. Below the menu bar, there are two main sections: 'Connection Control' on the left, which shows 'Connected HID', and 'Read Datalogger' on the right, which includes a 'Please select group' dropdown menu with values '1' and '30', and a 'Read' button. Below these sections is a 'Data filtering' section with a dropdown menu showing 'Group1(49)'. The main area of the window contains a table with three columns: 'No.', 'Group', and 'Data'. The table lists 18 rows of data. To the right of the table is a 'Statistics' section displaying various metrics for the selected group.

No.	Group	Data
1	Group 1	Iron:1.50mm
2	Group 1	Iron:--mm
3	Group 1	Iron:--mm
4	Group 1	Iron:1.10mm
5	Group 1	Iron:1.10mm
6	Group 1	Iron:1.11mm
7	Group 1	Iron:1.11mm
8	Group 1	Non-Iron:0.0um
9	Group 1	Non-Iron:0.7um
10	Group 1	Non-Iron:0.0um
11	Group 1	Non-Iron:0.7um
12	Group 1	Iron:1.09mm
13	Group 1	Iron:1.10mm
14	Group 1	Non-Iron:0.0um
15	Group 1	Iron:0.7um
16	Group 1	Non-Iron:502um
17	Group 1	Non-Iron:501um
18	Group 1	Non-Iron:755um

**Statistics**

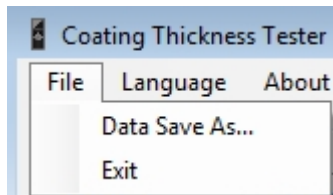
Count: 49  
Avg: 428.4um  
Max: 1.5mm  
Max Index: 1  
Min: 0um  
Min Index: 8

Iron Count: 28  
Iron Avg: 551.51um  
Iron Max: 1.5mm  
Iron Min: 0.7um

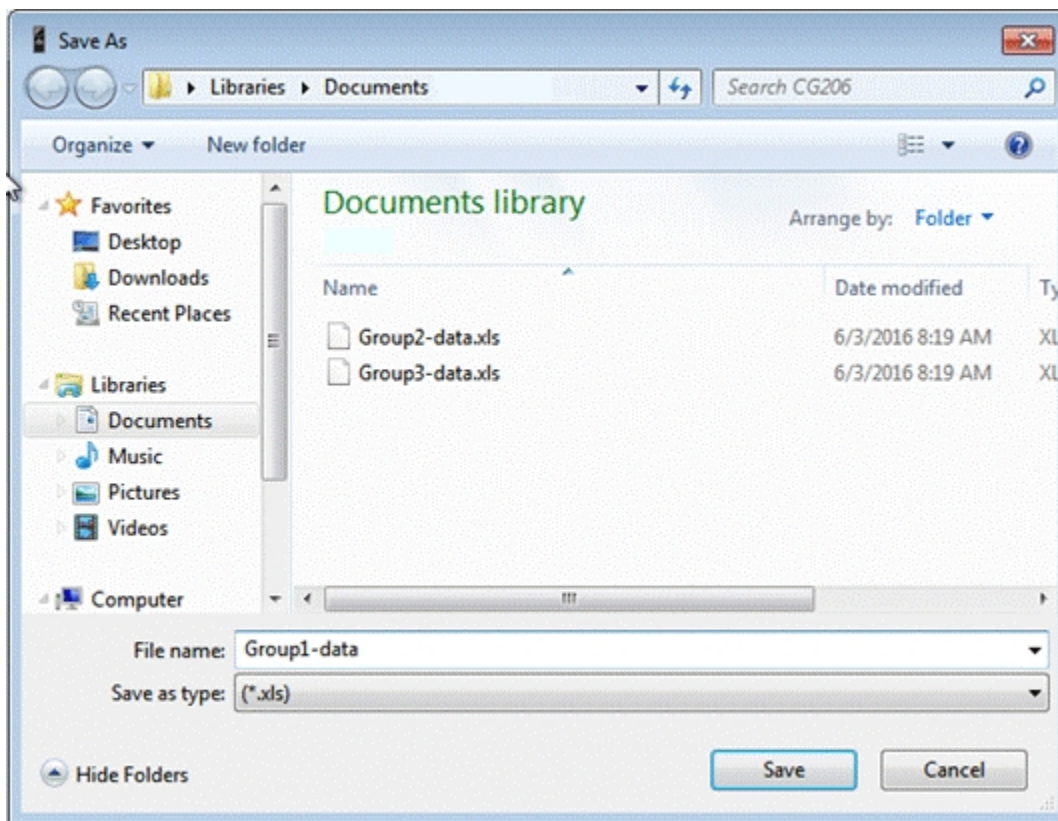
Non-Iron Count: 19  
Non-Iron Avg: 292.08um  
Non-Iron Max: 1.37mm  
Non-Iron Min: 0um

## Data File Save

1. To save the data for a specific group to your PC, you must first select the group number from the Data Filtering pulldown.
2. Click the FILE menu and choose the “Data Save As...” option.



3. Name the file and save it using the default extension.  
The file will be saved with the “.xls” extension which can be opened with Excel.



Note: Data saved to the PC cannot be viewed by the software.  
You will need to locate the saved data file in your Documents folder and open it with Excel.