



## MTi13 Thermal Imager

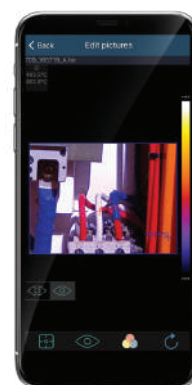
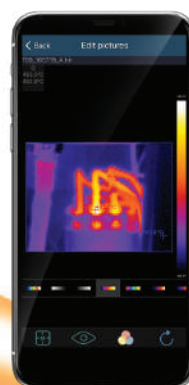
Detecting a hot connection in a distribution board has never been this easy. The MTi13 is focus free and has a large touch screen that makes detecting and analyzing hot spots quick and easy. This lightweight thermal imager with 80x80 pix resolution at 50Hz offers real-time detection of hot spots ideal for maintenance electricians. The Wi-Fi functionality allows the user to transfer live thermal information to a smart device for analysis. It features adjustable emissivity, temperature ranges from -20°C to 650°C, 3 moveable spots and area temperatures, centre spot, automatic Hot and Cold spot markers; and line measurement. The instrument comes supplied in a hard carry case and includes a charging base, microSD card and Type-C data cable.

### Features

- 80x80 Pixel Thermal Detector
- 6,400 points real temperature
- 50Hz Image Frequency
- Hot, Cold and Centre Spot Temperature
- 3 Area and 2 Line Analysis
- 3 Manual Spots
- Hot, Cold and Centre Spot Temperature
- 3.5" TFT LCD display, Touch Screen
- Instant share & save via WiFi to PC, iOS and Android smart devices
- Colour Palettes include Iron, Rainbow, Grey, Grey Inverted, Brown, Blue/Red, Feather, Zone Alarm
- Rugged and industrial design casing
- Easy to use functions



Function	Range
<b>Imaging and Optical Data</b>	
Field Of View	21° x 21°
Spatial Resolution	4.53mrad
Thermal Sensitivity	<0.1° at 30°C (80°F)/100mK
Image Frequency	50Hz
<b>Focus Mode Manual</b>	
Focus Mode	Focus Free
Focal Length	7.5mm
Focal Plane Array (FPA)/Spectral Range	Uncooled Microbolometer/8-14µm
IR Resolution	80 x 80 pixels
<b>Image Presentation</b>	
Display	3.5" colour TFT LCD, Touch Screen
Display Resolution	640 x 480 pixels
Image Modes	IR Image, Visual, Pic-in-pic, Thermal Fusion, Zone Alarm
Colour Palettes	Iron, Rainbow, Grey, Grey Inverted, Brown, Blue/Red, Feather
<b>Measurements</b>	
Object Temperature Range	-20 to 650°C (-4 to 1202°F)
Object Temperature Accuracy	±2°C (3.6°F) or ±2% of reading
<b>Measurement Analysis</b>	
Spot	Centre Spot, 3 Manual Spots
Automatic	Automatic Hot/Cold Detection
Line	2 Line Analysis
Area	3 Area Analysis
Adjustable Emissivity	0.01 to 1.0
Measurement Correction	Emissivity, Reflected Temperature, Ambient, Temperature, Humidity, Infrared Compensation, Distance Compensation
<b>Storage</b>	
Storage Media	8GB Micro SD Card, 3.4GB Internal EMMC
Video Storage Mode	Standard MPEG-4
Image Storage Mode	JPEG and HIR and simultaneous visual image including measurement data
<b>Data Communication Interfaces</b>	
Interfaces	Type-C
Wi-Fi	802.11, transfer images and real time video stream
Size	224 x 77 x 96mm
Weight	500g



**MTi13** | **80 x 80 Pixels with Wi-Fi**

**Contact Us**  
**South Africa**

[www.major-tech.com](http://www.major-tech.com) [sales@major-tech.com](mailto:sales@major-tech.com)

**Australia**

[www.major-tech.com.au](http://www.major-tech.com.au) [info@major-tech.com.au](mailto:info@major-tech.com.au)